



Corporate Involvement Pack



Building Inclusive Futures, One Partnership at a Time.



Contents

Our Charity	1
Our Support in Numbers	2
Meet Charlotte and Rose	3
Benefits of Partnering with Me2Club	4
Ways to Get Involved	5
Business Partnerships in Action	6
How we will support your Event	7
Charity of the Year Partnership	8
Corporate Donations	9
Partnership Tiers	10
Launching our Partnership and Ongoing Communications	11
How to Get Started	12
Thank You	13





Our Charity

Our Mission

Our mission is to address the challenges of isolation and exclusion experienced by children and young people with additional needs and disabilities.

Our Vision

To champion the right for inclusion for all children and young people with additional needs and disabilities across Berkshire, through our partnerships with families, volunteers, activity leaders and other voluntary and statutory sector organisations.



"Me2 Club have opened our eyes to a different world that isn't as lonely as it was"

Me2 Club Parent

What We Offer

We support children and young people aged 5-19 years with additional needs and disabilities in the Wokingham and Reading Boroughs to take part in mainstream activities. We recruit and train volunteers to 'buddy' 1:1 with the children so they can join in and have fun. With our help children can access a wide range of activities including sports clubs, uniformed groups and drama classes, giving them a chance to build independence and vital life and social skills.

We run family events throughout the year, which are available to children and young people who are supported by Me2 Club.

We also run a SEND Youth Forum for young people aged between 8-25 years and their siblings every 6 weeks. We ran a pilot of our new Teen Group in October 2022 for our teenagers aged between 13-19 who will be planning social activities and fundraising to make these plans happen.

"She loves Me2 Club and so do I. It's made us both feel cared for and it was a very dark time before"

Me2 Club Parent



Our Support in Numbers



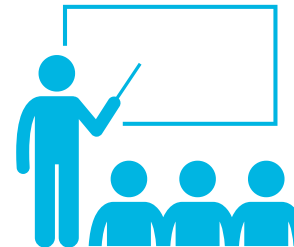
167

Children and Young People
supported through all our services



48

Individual families
attended our parties



75

Core Service
Volunteers trained



4,014

Volunteering hours across
our services



180

Volunteers supported
this year across our services



3,165

Hours of respite for parents
and families

Meet Charlotte and Rose

Charlotte is 11 years old and has Prader Willi Syndrome, which means that she finds it difficult to understand complex tasks at Guides. She can also find the environment overstimulating, particularly if it is too loud. She is friendly and outgoing but struggles to maintain friendships and can get quite upset if she is feeling left out. At her previous school she was on a reduced timetable, meaning that she spent a lot of time at home with her Mum, isolating her further and putting more pressure on her Mum. Charlotte's main goal was to be able to interact with her peers more whilst at Guides, so it was important to understand the triggers, which cause her to become overwhelmed and put reasonable adjustments in place to support her. Rose is fantastic at doing this, she was a Guide when she was younger, so she understands the structure of the group, which helps with explaining the games and activities. She has a calm, friendly and approachable demeanour which is compatible with Charlotte. They immediately formed a fantastic bond.

It's an absolute joy having Rose as a buddy for my daughter Charlotte. Rose comes across as a very kind young woman, and so patient which is rather unique for a teenager. I feel full of appreciation for Rose spending her time with Charlotte. Charlotte really enjoyed having Rose as her buddy and feel quite contented in Rose's company. Thank you Me2 Club for finding, and arranging, such a brilliant buddy for Charlotte."

Charlotte's mum



Having Rose at Guides with Charlotte has made a huge difference, she is now able to tell Rose if she is starting to feel overwhelmed, she can choose something from her special pink folder to help her to regulate and re-join when she is ready. Rose explains the activities in a way that she understands, which means she is able to earn badges and most importantly she has made friends, including one young person who she is especially close with.



Benifits of Partnering with Me2Club

Brand Alignment

- **Value-Driven Partnership:** Partnering with Me2 Club aligns your brand with values of inclusion and community support, enhancing your mission statement and demonstrating a commitment to social impact.
- **Enhanced Reputation:** Supporting Me2 Club improves public perception and builds trust among customers who prioritize corporate responsibility, fostering loyalty to your brand.
- **Positive Brand Exposure:** Me2 Club will feature corporate partners in marketing materials and events, amplifying visibility and positioning your business as a leader in community support.

Employee Engagement

- **Morale Boosting:** Volunteering and fundraising foster team camaraderie and purpose, increasing employee fulfillment and job satisfaction.
- **Skill Development:** Engagement with Me2 Club helps employees develop teamwork, leadership, and communication skills, along with experience in project management and event coordination.
- **Employee Retention:** Companies investing in social responsibility see higher employee loyalty, as staff are more likely to remain with organizations that align with their values.



Benifits of Partnering with Me2Club

Networking Opportunities

- **Connections with Like-Minded Organizations:** Partnering with Me2 Club expands your network to include businesses and leaders with shared goals, fostering collaboration and knowledge sharing.
- **Access to Events and Workshops:** Me2 Club hosts networking events that allow partners to engage with other businesses and community leaders, creating opportunities for beneficial partnerships.
- **Visibility in the Community:** Participation in Me2 Club events enhances visibility among community members, positioning businesses as active contributors to local issues.

Corporate Social Responsibility (CSR)

- **Strengthening CSR Profile:** Partnering with Me2 Club bolsters your CSR profile by demonstrating a commitment to social issues, particularly for children and families with additional needs.
- **Meeting ESG Criteria:** Collaboration showcases your contributions to social welfare, helping meet the environmental, social, and governance (ESG) criteria that stakeholders value.
- **Public Reporting and Transparency:** Partnering with Me2 Club provides measurable outcomes for annual CSR reports, highlighting your company's social impact and effectiveness.



Ways to get involved

Tell us how your organisation or company can help make an impact—we're open to your ideas!

To get you thinking, here are some ways businesses have partnered with us:

Product Lines

Create a limited edition product or service, with a portion of the proceeds going to Me2 Club. Whether it's a unique design inspired by the charity's mission or a service package tailored to your customers, this initiative can both raise funds and increase visibility for the charity.

Exclusive Workshops and Training:

Host workshops or training sessions where participants pay a fee, with proceeds supporting Me2 Club. These could range from professional development courses to creative classes, all branded in collaboration with the charity to maximise exposure.

Skills-Based Support

Utilise your team's expertise to support Me2Club in various impactful ways. This could include offering professional services, such as marketing and communication strategies, to help us promote our charity more effectively. Your team could assist us with campaigns, social media management, or designing promotional materials, all of which will help raise awareness and increase our reach to more families in need.

Storytelling through Content Creation:

Use your company's platform to share powerful stories of the children and families impacted by Me2 Club. Through blog posts, videos, and social media content, you can reach a wider audience, bringing the charity's work into the spotlight.



Ways to get Involved

Fundraising Initiatives

Host creative fundraising events, from sponsored challenges to office fun days. We provide all the resources and guidance needed to make your events successful and impactful.

Sponsorship Opportunities

Increase your brand's visibility by sponsoring one of our key events or programs. Sponsorship packages are flexible and designed to meet your budget while maximizing your community impact.

Corporate Donations and In-Kind Support

Make a direct impact with a corporate donation or by providing in-kind support, such as products, services, or expertise. Every contribution helps us support more children and families.

Employee Volunteering

Encourage your employees to volunteer with Me2Club. We offer a range of volunteer opportunities, including one-day events and ongoing roles, all aimed at supporting children with additional needs in your local community.



Business Partnerships in Action: Events and Challenges

Visit www.Me2club.org.uk for our latest Events and Challenges.

Football Tournaments



Walking/ Marathons



Cycle challenges



Skydives



Golf Tournaments



Santa Runs





How we will support your Event

We understand that organising successful fundraising events can be a challenge, so we're here to make it easier. Our team will provide you with:

Post-Event Recognition:

We will publicly recognise your company's efforts through our social media, newsletters, and website to highlight your contributions and celebrate your success.

Online Fundraising Support:

We can help set up online fundraising pages to streamline donations, track progress, and share your efforts with stakeholders.

Marketing & Promotional Materials:

We will supply branded materials, including flyers, posters, and social media templates, to help you promote your event both internally and externally.

On-the-Day Support:

If applicable, Me2 Club representatives can attend your events to help manage activities, give speeches, and connect with your employees and clients.

Planning Support:

Me2 Club will help create a tailored event plan, providing templates, resources, and ideas to fit your company's goals.



Charity of the Year Partnership

Make us your chosen charity

Select Me2Club as your Charity of the Year and embark on a year-long journey of impact. We'll collaborate with you to create an engagement plan that includes fundraising events, volunteering opportunities, and awareness campaigns tailored to your business.



Every Donation Makes a Difference

While we've outlined our three-tier donation packages, we want to emphasize that every contribution to Me2Club is greatly appreciated—no matter the amount. We understand that every supporter's capacity to give is different, and we do not expect our supporters to donate a set amount.

Every donation, large or small, contributes to our mission of helping children with additional needs participate fully in their communities. For instance, a donation of £500 covers the cost of recruiting and training one new volunteer, who will be carefully matched with a child based on their skills and personality.





Partnership Tiers

Tier 1: Sponsor a Volunteer - £500

Impact: Your £500 donation covers the cost to recruit, train, and match one dedicated volunteer with a child. This ensures that the child receives personalized support, allowing them to participate in mainstream activities they love.

Tier 2: Support Two Volunteers - £1,000

Impact: Your £1,000 donation enables us to recruit, train, and match two volunteers with two children. This doubles the positive impact, helping more children gain confidence, make friends, and enjoy the activities they're passionate about.

Tier 3: Empower a Group of Volunteers - £2,500

Impact: Your £2,500 donation allows us to recruit, train, and match five volunteers with five children. This significant contribution supports multiple families, ensuring that more children can participate in activities that improve their social skills, independence, and well-being.

Launching our Partnership and Ongoing communication

Launching our Partnership

To celebrate the launch of our partnership, we will :

- We will share an announcement across our three social media platforms to celebrate the launch of our partnership.
- Any fundraising events you hold will be promoted through our channels to help reach a wider audience.
- Your logo will be featured on our website and included in our annual impact reports.
- Updates on our partnership and your fundraising events will be shared in our monthly newsletter, reaching funders, partners, supporters, and families.

On Going communications

- **Dedicated Account Manager:** You will have a dedicated point of contact at Me2 Club who will work closely with your company, answering questions and providing regular updates on the partnership's progress.
- **Impact Reporting:** We will provide regular reports showing the direct impact of your support, including how funds raised are being used and the difference you are helping to make in the lives of children and families.
- **Collaborative Planning:** We will work together on planning annual activities, ensuring your company has the opportunity to be involved in events that align with your goals and timeline.
- **Regular Check-ins:** Through ongoing meetings and check-ins, we'll ensure the partnership continues to be beneficial for both parties and identify any new opportunities for collaboration.

How to get started

To explore how your company can collaborate with Me2 Club, we invite you to reach out and discuss how we can create a bespoke partnership together.

Please contact Hannah Norris, our Fundraising Manager, to start the conversation:

Hannah Norris

Email: hannah@me2club.org.uk

Phone: 07301022553

Together, we can build a partnership that creates lasting change and supports young people in accessing the activities they love.

Thank You!



Thank You for Your Support

Whether you choose to donate through our tiered packages or contribute in another way, your support is vital in making a lasting difference in the lives of the children and families we serve. We are grateful for every pound donated and for the community of supporters who believe in our mission.